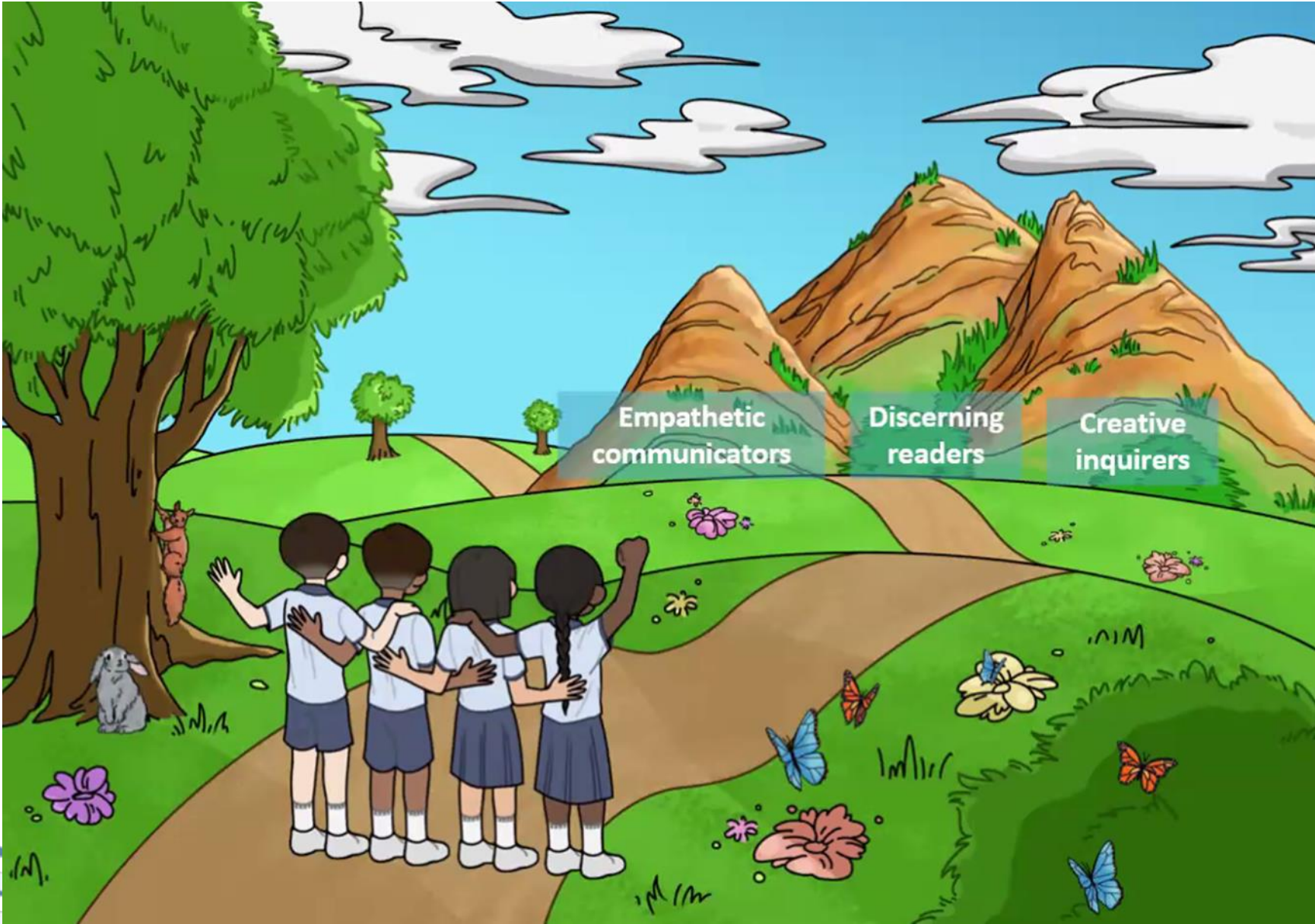




P₃ SUBJECT BRIEFING ENGLISH LANGUAGE



A COMMUNITY OF COMPASSIONATE LEADERS AND INNOVATORS



English Language Syllabus 2020 Learner Outcomes



Overview of P3 English Syllabus

The STELLAR Approach

STStrategies for
English
Language
Learning and
Readings

Key Strategies

- Exploratory Talk
- Word Study
- Supported Reading
- Annotation
- Explicit instruction of Grammar
- Teaching Vocabulary in context
- Writing Process Cycle
- Guided Writing

The STELLAR Vision

To develop in our children **the love for reading** and build a **strong foundation in the English Language**

STELLAR 2.0

Greater emphasis on

- **21st century competencies**
- **Desired EL Learner Outcomes** with attention to **core values**

P3 English Assessment Matters

Holistic assessment through on-going formative and summative assessments.



Level	Term 1 LC %	Term 2 ORAL %	Term 3 WRITING %	Term 4 EYE %
P3	5	10	15	70



Term 1

Listening Comprehension

14 Questions – 14 Marks

- a) Picture matching
- b) Sequencing
- c) Note-taking
- d) Text comprehension

Term 2

Oral Presentation

- Students will need to prepare their presentation on a given topic.
- They will present to their classmates.

Term 3

Guided Writing

20 marks

- Picture series with helping words



Term 4 – End of Year Examinations

Paper	Component	Total Marks	Duration
1	Guided Writing	20 marks	50 min
2	Language Use & Comprehension	50 marks	1h 15 min
3	Listening Comprehension	14 marks	Approximately 30 min
4	Oral <ul style="list-style-type: none">- Reading aloud- Stimulus-based Conversation	16 marks	Approximately 10 min

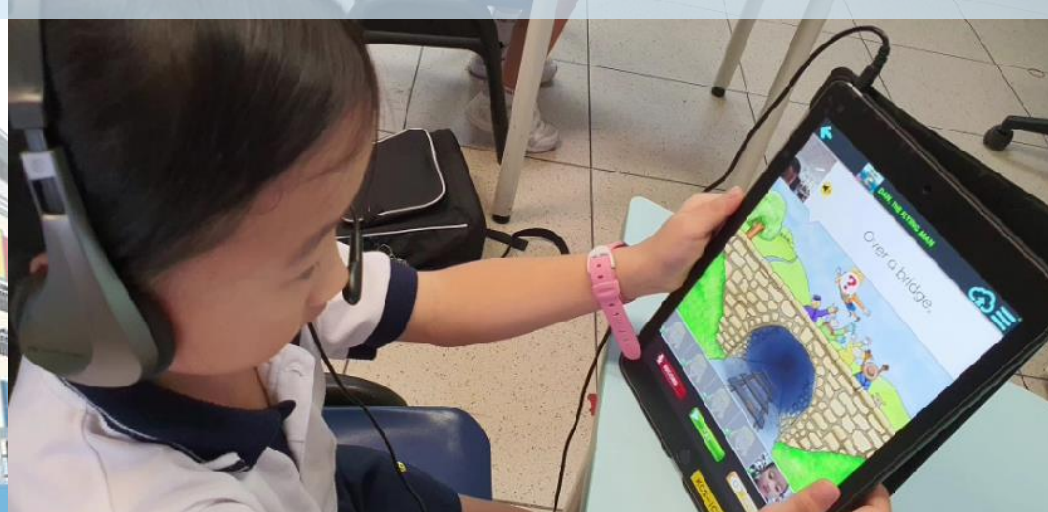
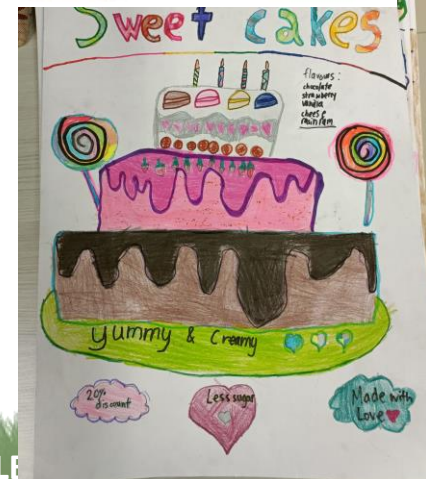


P3 English Programmes/Activities

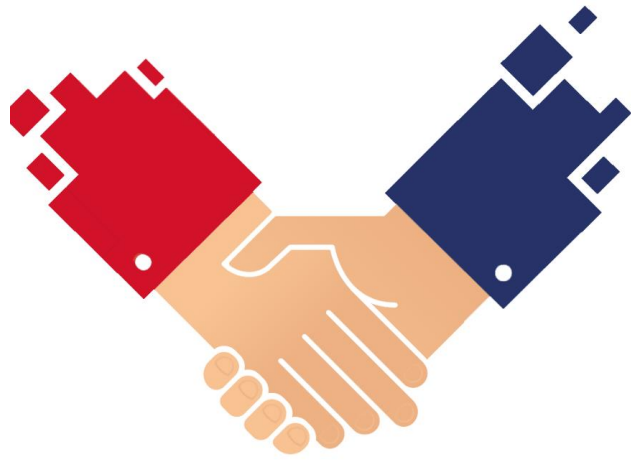
- Novel Reading Programme
- Moo-o Digital Storytelling
- Language Fiesta activities/ Theatre Exposure
- Reading Remediation Programme (RRP)
- School-based Dyslexia Programme (SDR)



I ♥ ENGLISH



Every Parent – A Supportive Partner

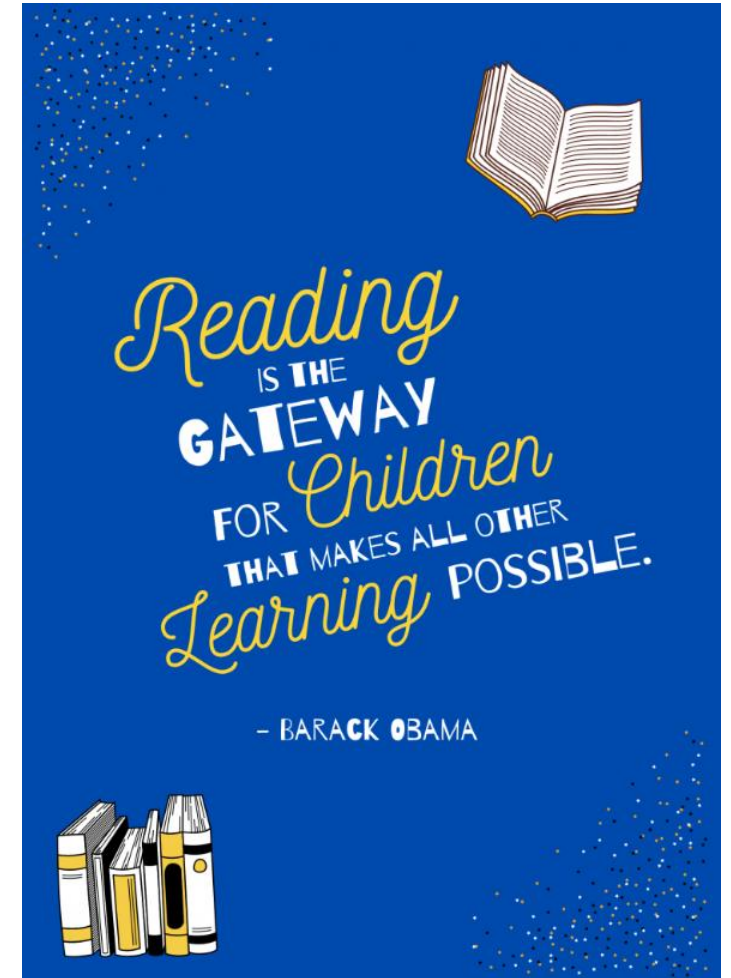


- **Support** and **partnership** of parents/guardians are crucial in developing dispositions for lifelong learning
- Parents/guardians play an important role in **fostering the love for learning**



Every Parent – A Supportive Partner

- Give your child the **time** and **space** to deepen their learning.
- **Read to** and **with** your child.
- Spend time **talking to them** about everyday events and **encourage them** to share their thoughts.



A group of diverse children and adults are shown from a low-angle perspective, looking upwards towards the camera. The group includes several young girls, some wearing school uniforms and glasses, and two adults. The background is a plain, light color. The overall mood is positive and appreciative.

Thank you