

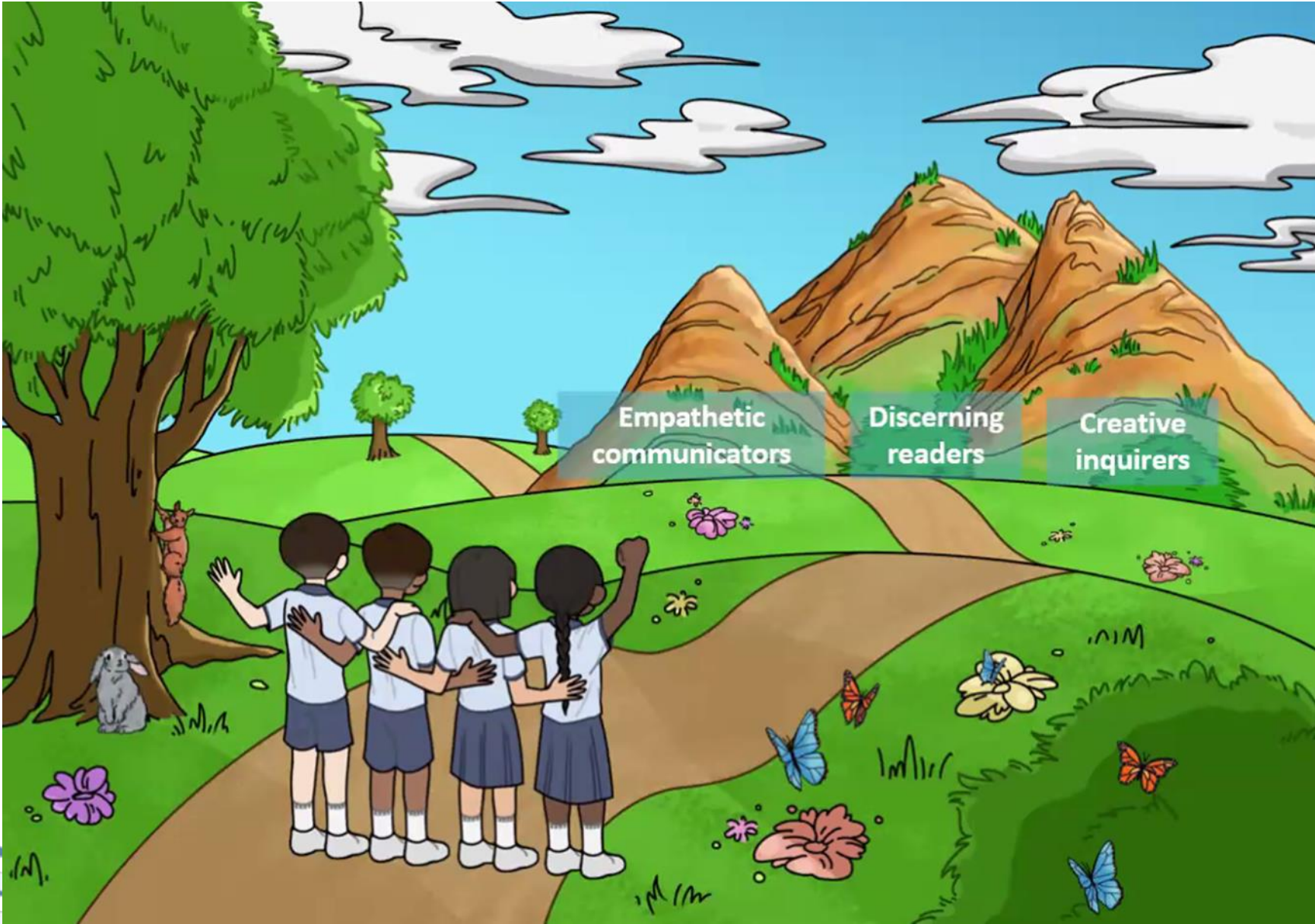


# P5 SUBJECT BRIEFING ENGLISH LANGUAGE



A COMMUNITY OF COMPASSIONATE LEADERS AND INNOVATORS





# English Language Syllabus 2020 Learner Outcomes



# Overview of P5 English Syllabus

## The STELLAR Approach

Strategies for  
English  
Language  
Learning and  
Reading

### The STELLAR Vision

To develop in our children **the love for reading** and build a **strong foundation in the English Language**

### STELLAR 2.0

Greater emphasis on

- **21st century competencies**
- **Desired EL Learner Outcomes** with attention to **core values**

### Key Strategies

- Exploratory Talk
- K-W-L
- Think-aloud
- Supported Reading & Retelling
- Word Study
- Annotation
- Explicit instruction of Grammar
- Teaching Vocabulary in context
- Writing Process Cycle





# P5 English Assessment Matters

Holistic assessment through on-going formative and summative assessments.



Level	Term 1 LC %	Term 2 ORAL %	Term 3 WRITING %	Term 4 EYE %
P5	5	10	15	70



# Term 1

## Listening Comprehension

20 Questions – 20 marks

- a) Picture matching
- b) Sequencing
- c) Text comprehension

# Term 2

## Oral

40 marks

- Reading Aloud
- Stimulus-based Conversation

# Term 3

## Writing

36 marks

- Continuous writing



# Term 4 – End of Year Examinations

Paper	Component	Total Marks	Duration
1	Continuous Writing	36 marks	1h 10 min
	Situational Writing	14 marks	
2	Language Use & Comprehension	90 marks	1h 50 min
3	Listening Comprehension	20 marks	Approximately 50 min
4	Oral <ul style="list-style-type: none"><li>- Reading aloud</li><li>- Stimulus-based Conversation</li></ul>	40 marks	Approximately 10 min



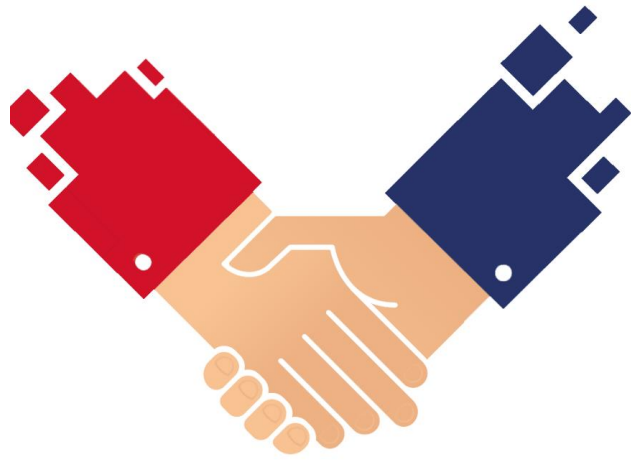


# P5 English Programmes/Activities

- Little Red Dot Reading Programme
- Extensive Reading Programme (ERP)
- Language Fiesta activities
- Reading Remediation Programme (RRP)



# Every Parent – A Supportive Partner



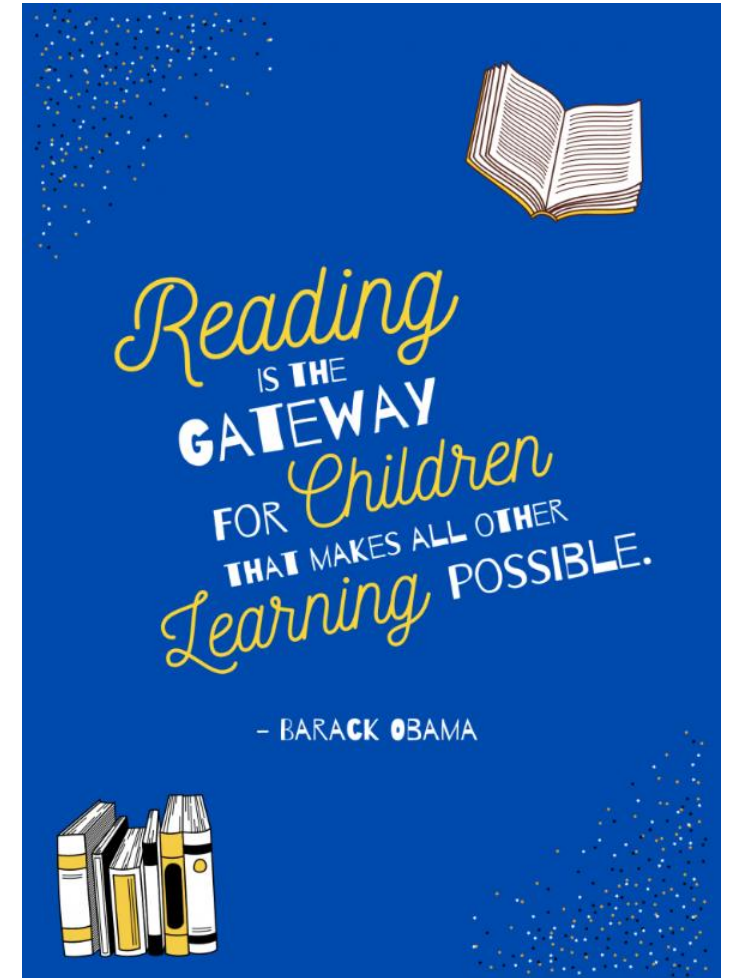
- **Support** and **partnership** of parents/guardians are crucial in developing dispositions for lifelong learning
- Parents/guardians play an important role in **fostering the love for learning**





# Every Parent – A Supportive Partner

- Give your child the **time** and **space** to deepen their learning.
- **Read to** and **with** your child.
- Spend time **talking to them** about everyday events and **encourage them** to share their thoughts.



A group of diverse children and adults are shown from a low-angle perspective, looking upwards towards the camera. The group includes a young girl with a wide smile, a boy with glasses, a girl with glasses, a girl with a neutral expression, a girl with glasses, a girl with glasses, and a girl with glasses. The background is a plain, light color.

*Thank you*