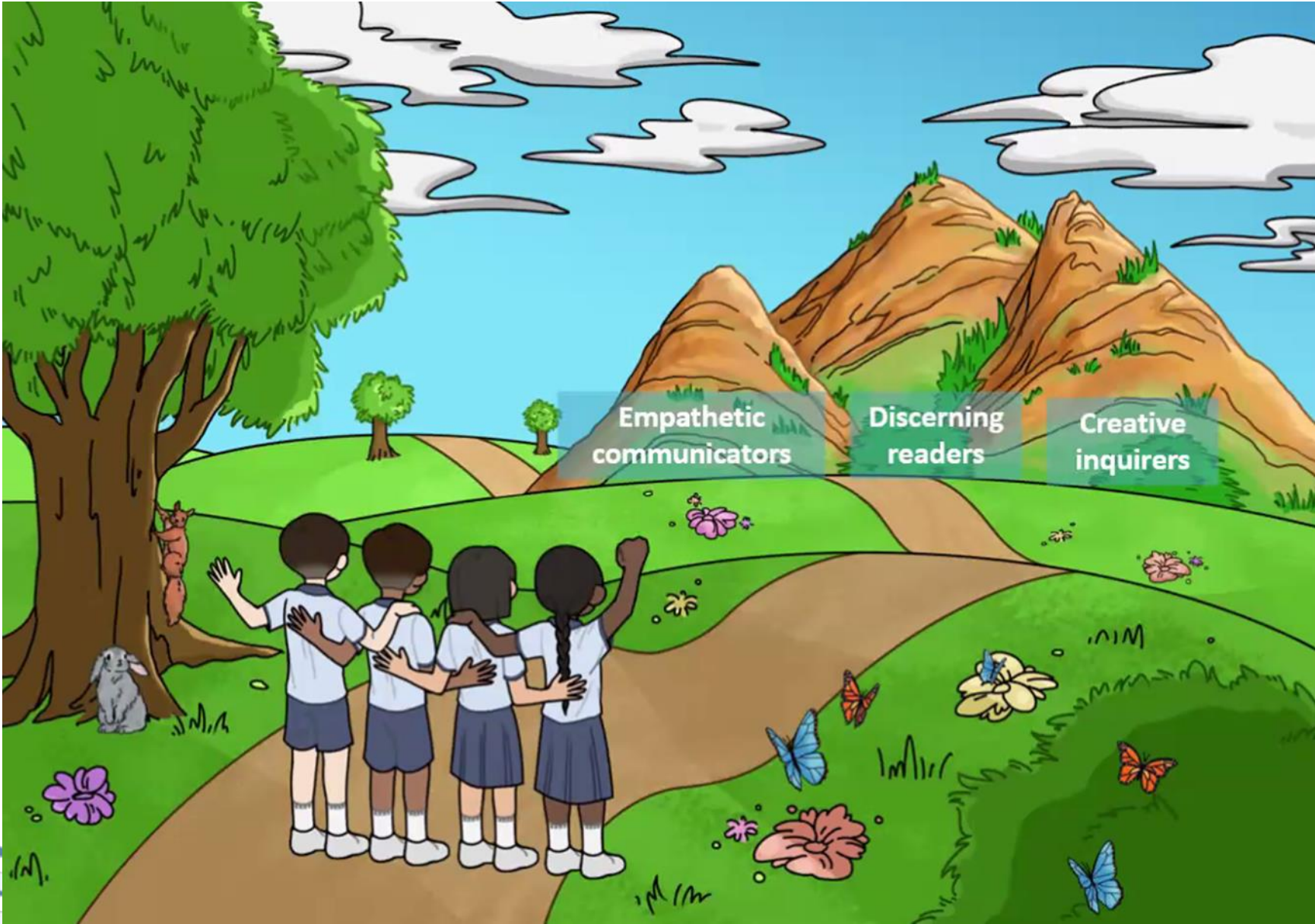




P6 SUBJECT BRIEFING ENGLISH LANGUAGE



A COMMUNITY OF COMPASSIONATE LEADERS AND INNOVATORS



English Language Syllabus 2020 Learner Outcomes



Overview of P6 English Syllabus

The STELLAR Approach

STrategies for
English
Language
Learning and
Readings

The STELLAR Vision

To develop in our children **the love for reading** and build a **strong foundation in the English Language**

STELLAR 2.0

Greater emphasis on

- **21st century competencies**
- **Desired EL Learner Outcomes** with attention to **core values**

Key Strategies

- Exploratory Talk
- K-W-L
- Think-aloud
- Supported Reading & Retelling
- Word Study
- Annotation
- Explicit instruction of Grammar
- Teaching Vocabulary in context
- Writing Process Cycle



P6 English Assessment Matters

Holistic assessment through on-going formative and summative assessments.



Level	Term 1	Term 2	Term 3	Term 4
P6	Paper 2	Oral <ul style="list-style-type: none">• Reading aloud• Stimulus-based conversation	Preliminary Examinations PSLE Oral	PSLE LC PSLE Written Papers



English Language

Paper	Component	Total Marks	Duration
1	Continuous Writing	36 marks	1h 10 min
	Situational Writing	14 marks	
2	Language Use & Comprehension	90 marks	1h 50 min
3	Listening Comprehension	20 marks	Approximately 50 min
4	Oral <ul style="list-style-type: none">- Reading aloud- Stimulus-based Conversation	40 marks	Approximately 10 min



EL Paper 2 Components

Booklet A – MCQ

Grammar

Vocabulary

Vocabulary Cloze

Visual Text Comprehension

Booklet B – (Open-ended)

Grammar Cloze

Editing for Spelling & Grammar

Comprehension Cloze

Synthesis / Transformation

Comprehension Open-ended

Total marks: 90
Duration: 1h 50 min

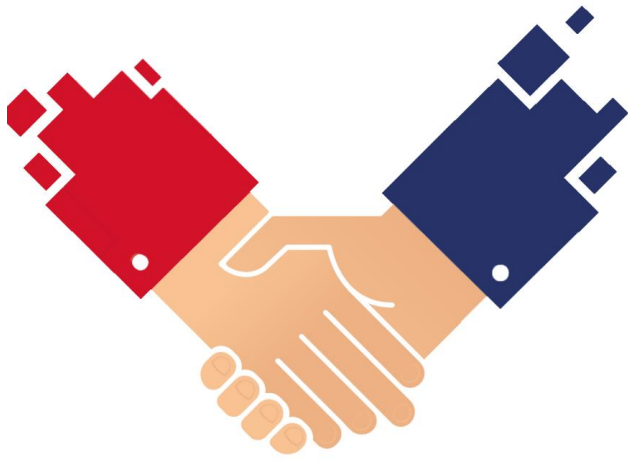


P6 English Programmes/Activities

- Little Red Dot Reading Programme
- Extensive Reading Programme (ERP)
- Language Fiesta activities



Every Parent – A Supportive Partner

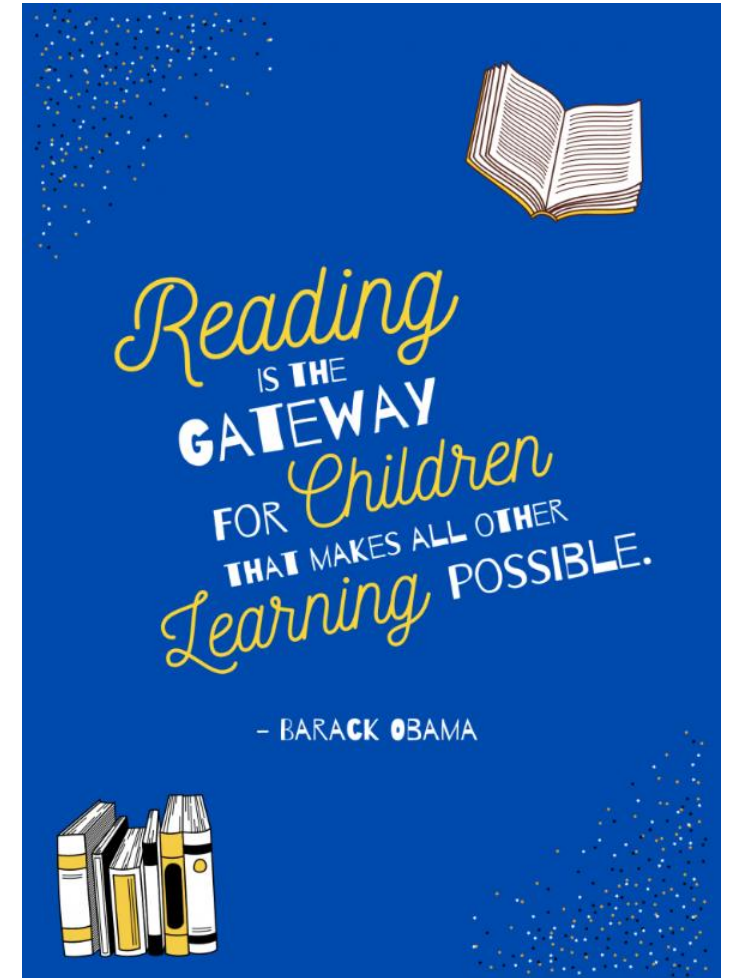


- **Support** and **partnership** of parents/guardians are crucial in developing dispositions for lifelong learning
- Parents/guardians play an important role in **fostering the love for learning**



Every Parent – A Supportive Partner

- Give your child the **time** and **space** to deepen their learning.
- **Read to** and **with** your child.
- Spend time **talking to them** about everyday events and **encourage them** to share their thoughts.



A group of diverse children and adults are shown from a low-angle perspective, looking upwards towards the camera. The children are of various ethnicities and ages, some wearing glasses and school uniforms. The adults are also diverse, with one man wearing glasses and a beard. The overall mood is positive and grateful.

Thank you