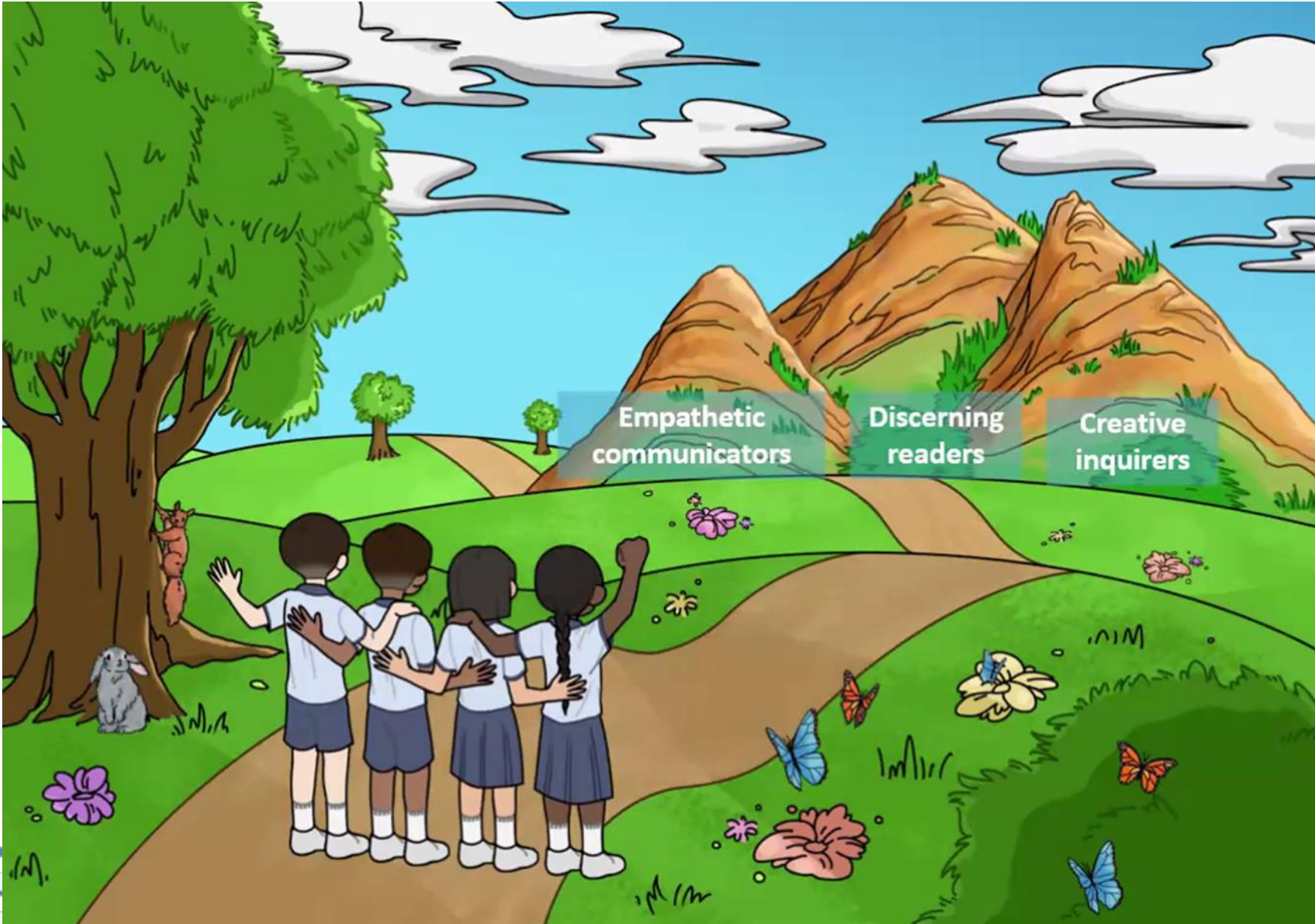




P6 SUBJECT BRIEFING FOUNDATION ENGLISH LANGUAGE



A COMMUNITY OF COMPASSIONATE LEADERS AND INNOVATORS



English Language Syllabus 2020 Learner Outcomes



Overview of the English Syllabus

The STELLAR Approach

STStrategies for
English
Language
Learning and
Readings

The STELLAR Vision

To develop in our children **the love for reading** and build a **strong foundation in the English Language**

STELLAR 2.0

Greater emphasis on

- **21st century competencies**
- **Desired EL Learner Outcomes** with attention to **core values**

Key Strategies

- Exploratory Talk
- K-W-L
- Think-aloud
- Supported Reading & Retelling
- Word Study
- Annotation
- Explicit instruction of Grammar
- Teaching Vocabulary in context
- Writing Process Cycle



P6 English Assessment Matters

Holistic assessment through on-going formative and summative assessments.



Level	Term 1	Term 2	Term 3	Term 4
P6 FEL	Paper 2	Oral <ul style="list-style-type: none">• Reading aloud• Stimulus-based conversation	Preliminary Examinations PSLE Oral	PSLE LC PSLE Written Papers



Term 4 – End of Year Examinations

Paper	Component	Total Marks	Duration
1	Continuous Writing	16 marks	1h 10 min
	Situational Writing	9 marks	
2	Language Use & Comprehension	40 marks	1h min
3	Listening Comprehension	15 marks	Approximately 35 min
4	Oral <ul style="list-style-type: none">- Reading aloud- Stimulus-based Conversation	20 marks	Approximately 10 min



FEL Paper 2 Components

Booklet A (MCQ)

Grammar

Punctuation

Vocabulary

Visual Text Comprehension

Booklet B (Open-ended)

Form Filling

Editing for Grammar

Editing for Spelling

Completion of Sentences

Synthesis

Comprehension Cloze

Comprehension (Open-ended)

1 h

40 marks

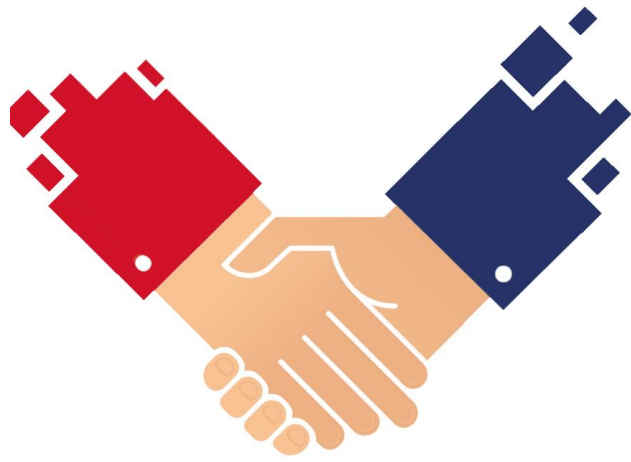


P6 FEL English Programmes/Activities

- Little Red Dot Reading Programme
- Extensive Reading Programme (ERP)
- Language Fiesta activities
- Reading Remediation Programme (RRP)



Every Parent – A Supportive Partner

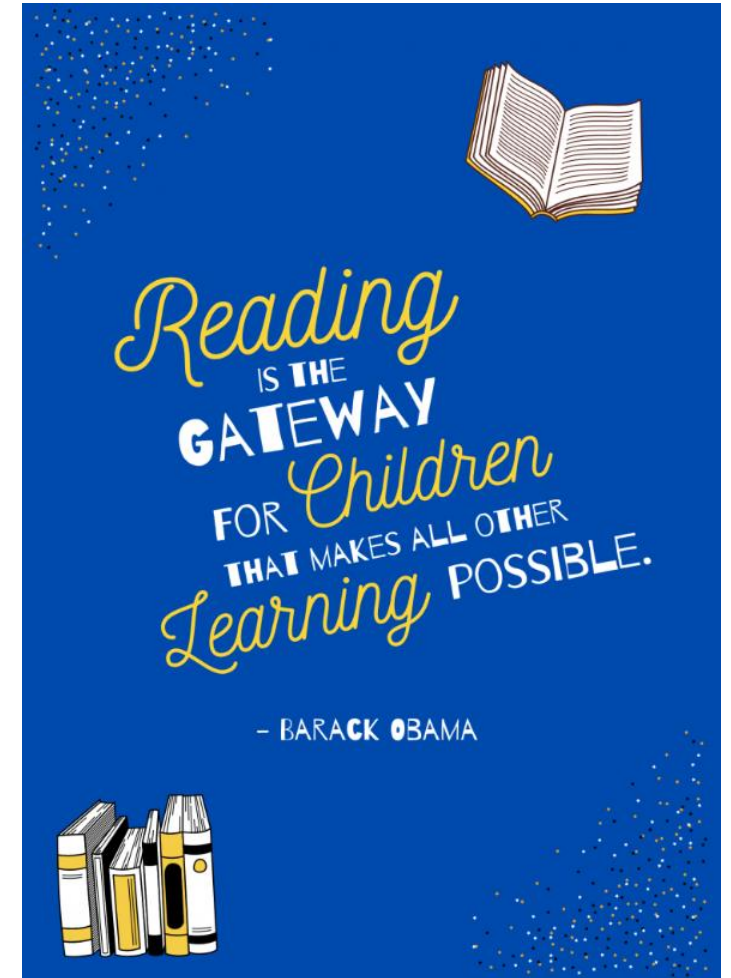


- **Support** and **partnership** of parents/guardians are crucial in developing dispositions for lifelong learning
- Parents/guardians play an important role in **fostering the love for learning**



Every Parent – A Supportive Partner

- Give your child the **time** and **space** to deepen their learning.
- **Read to** and **with** your child.
- Spend time **talking to them** about everyday events and **encourage them** to share their thoughts.



A high-angle, low-key photograph of a diverse group of children and adults looking upwards towards the camera. The subjects are arranged in a circle, with their faces filling most of the frame. The lighting is soft and warm, creating a positive and inclusive atmosphere. The children exhibit various expressions, from smiles to neutral looks. One child in the lower-left is wearing a white school uniform with a red crest and several colorful buttons. Another child in the lower-right is wearing a red shirt. The text 'Thank you' is centered in a dark blue, cursive font.

Thank you